

We're your one stop solution for

Sustainable
Development.

JM CIVIL & ENVIRO —REVOLUTIONIZING SUSTAINABILITY—

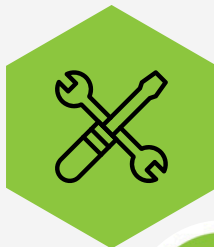
Wastewater
Treatment
Plants

Water
Treatment
Plants

Green
Building
Consultancy

Structural
Consultancy

Design
Engineering



Manufacturing



Supply



Installation
&
Commissioning



Contact Us

96730 79189



info@jmcne.com



www.jmcne.com

Water and Wastewater Treatment Solutions

Reduce water consumption by up to 40%*



save ₹30,000-₹50,000 per month, Industries using 1,000 KL/month on water tariffs.

Reduced water bills



save ₹6-12 lakh annually by avoiding tanker water costs.

Regulatory Compliance

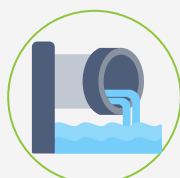


Avoid fines of ₹1-10 lakh/year



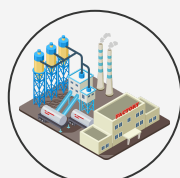
5M3/Hr Water Softener at Jejuri

Sewage Treatment Plant (STP)



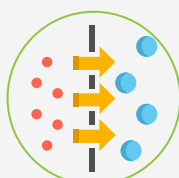
Save ₹2-3 lakh/year by reducing external waste disposal for mid-sized projects.

Effluent Treatment Plant (ETP)

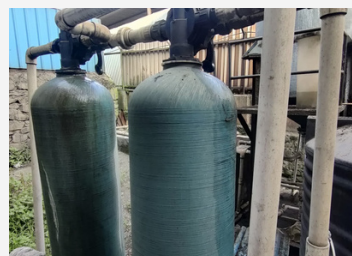


cuts disposal costs by 50%, saving up to ₹5 lakh/year.

Reverse Osmosis (RO)



Advanced RO systems cut reject water by 70%, saving ₹1.5-3 lakh/year.



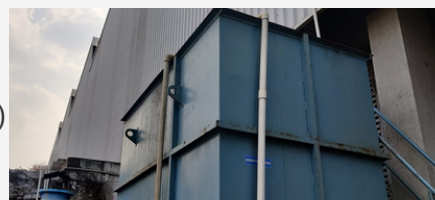
DM Plant at Pune



500 & 250 LPH RO at Pune



25M3/Hr Water Softener at Kolkata



10KLD STP at Pune



20 M3/Hr MB Plant at Chakan

Products

- Water Treatment Plant
- Water Softener
- UF (Ultra Filtration)
- Reverse Osmosis
- DM (De-Mineralization)
- MB (Mix Bed)
- STP (Sewage Treatment Plant)
- ETP (Effluent Treatment Plant)
- Batch Type ETP
- ZLD

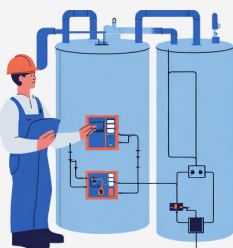
Projects - Water

- VA Tech Wabag
- Kalyani Global
- Wipro Water
- NFAI
- NBCC
- Crisil
- Fulcrum Worldwide
- NPL Bluesky Automotive
- Associated Manufacturing LLP
- Gardwel Industries
- Hindustan Coatings

Services Offered for Water



ANNUAL MAINTENANCE CONTRACT



OPERATION & MAINTENANCE



CHEMICALS, SPARES & CONSUMABLES



ENVIRONMENTAL MONITORING

Green Building Consultancy

- Certification under **IGBC, LEED, GRIHA, and ECBC** reports are the services that we provide



Persistent - IGBC & LEED v4.1 ID+C Gold



Satellite Gazebo - LEED EB O+M Platinum



Omicron Commerz - IGBC New Building Gold

Projects - Green Building Consultancy

- Persistent
- Mastek
- Omicron Builders
- Satellite Group
- NBCC
- NFAI
- A Advani Realty
- Shubh Aarambh
- Menon Bungalow

Energy & Water Savings



30-50% Reduction in Energy & Water use

Green Loans



loans at interest rates that are **0.25%-0.5% lower** than standard home loans.

Extra FSI



Additional FSI of upto **3%, 5% or 7%**

Tax Benefits



Get up to **10% reductions** in property tax*

Health & Productivity



Increase occupant productivity by **10-15%**.

Higher Rental & Resale Value



5-10% Higher Returns

Structural Design Consultancy

Commercial | Industrial | Institutional | Infrastructure | Residential

- RCC Structural Design
- Steel Structural Design
- Hydraulic Structure Design
- Structural Auditing
- Stability Certification
- Project Estimation
- Surveying
- DPR for water supply schemes

Optimized Material Usage



Precise design cuts material use **by 10-15%**

Project Estimation Accuracy



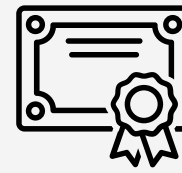
Accurate estimates **save ₹2-3 lakh** on small projects and **₹10-15 lakh** on larger ones.

Safety & Longevity



Early detection **saves up to ₹20 lakh** in repairs.

Stability Certification



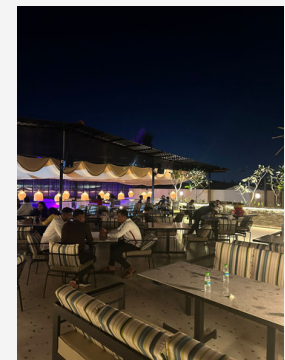
Ensures safety compliance, avoiding penalties of **₹5-10 lakh**.

Projects - Structural Design

- Indiabulls, Thane
- Dongare Village, Vasai
- Bandra Complex
- Topsy Turtle
- DLF Avenue, Pattoa Goa
- VTP Realty, Panvel
- Mid Town Plaza, Delhi
- Bachraj Developers, Mumbai



DLF Avenue, Pattoa Goa



Topsy Turtle



Mid Town Plaza, Delhi



Proposed Residential Bungalow

About Us



Yash Mutha

He holds an M.Tech in Civil and Environmental Engineering and is an IGBC AP. With 5 years of experience in water treatment, green building consultancy, and engineering, Yash ensures top-quality services.



Nilkanth Gosavi

An expert in structural engineering, with 5+ years of experience, Nilkanth holds an M.Tech in Structures. He specializes in structural design, with experience in both steel and RCC, ensuring reliable project execution.

Contact Us

HQ Address: JMCNE, Survey 137/1, Baner Pashan Link Road, Someshwarwadi Rd, Pune - 411026

Regd. Address: JM Civil & Enviro, Mutha Chambers, Vasanttrao Pawar Marg, Baramati, Pune - 413102

Mob. No: 96730 79189 | 94229 68934

Email: info@jmcne.com

Website: www.jmcne.com